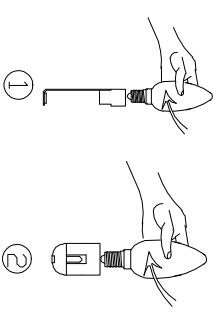


Cautions of installation

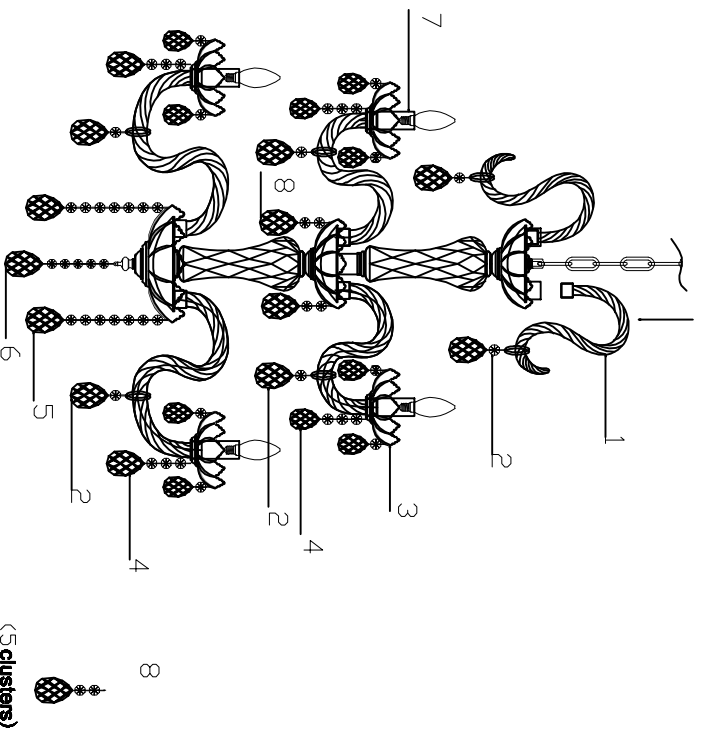
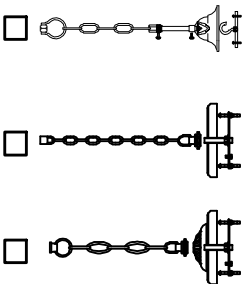
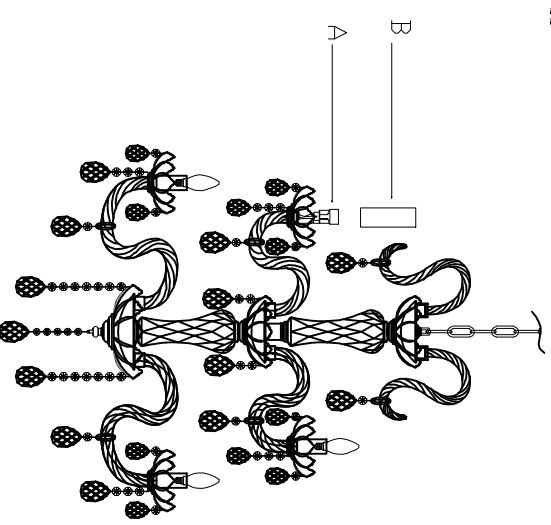
Install the bulbs

Hold the bulb firmly (you should not touch the hardware part in case of electric shock) and then install it clockwise till it is firm



- 1 Check the packed bags with numbers then open them.
2. Hang the crystals to the right places according to the illustration.
3. If some crystals are broken, you can get some in the spare parts bag.

Put the candle pipes "B" on the lampholder "A"



3QD3088-8+4BU

(12 clusters)
7

