




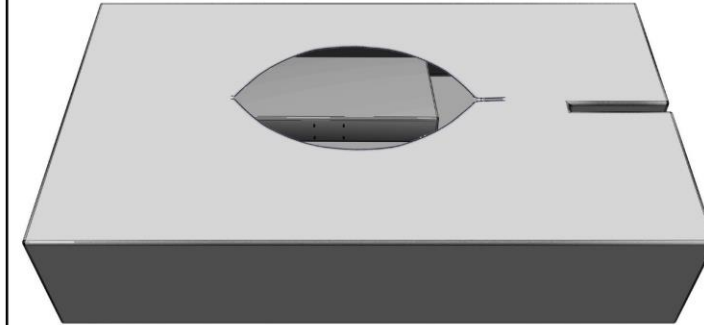
ASSEMBLY INSTRUCTION

KARE
DESIGN

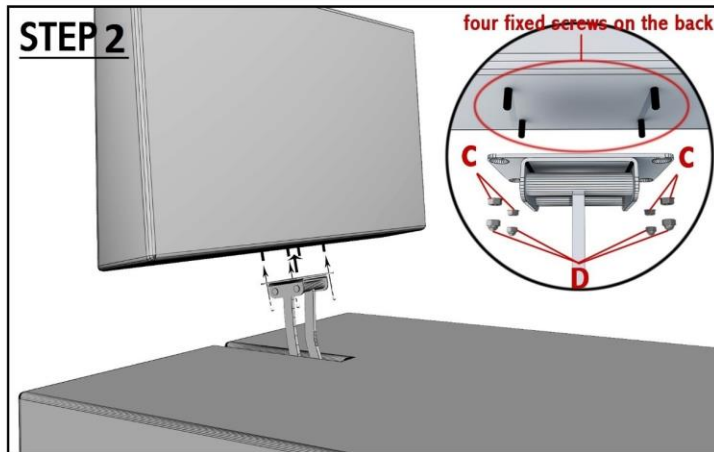
84744-Armrest / 84745-Armless Chair / 84746- Armless Chaise / 84747-Ottoman

HARDWARE LIST		
NO.	DES	QTY (pcs)
C	 nut	4
D	 nut cap	4
E	 wrench	1

STEP 1

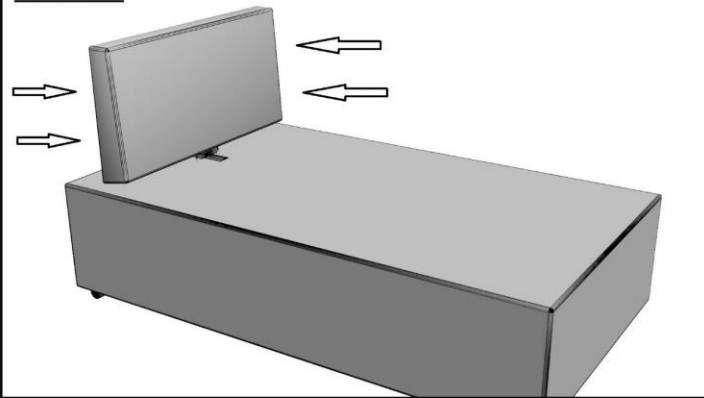


Open the zipper on the bottom, take out the back from the pocket of bottom.



Put the back with four fixed screws through four holes on the arm control, then use wrench (E) to tighten nuts (C) on fixed screws, finally screw nut caps (D) on the nut (C).

STEP 3



The whole back can move forward and back after finishing assembling.

ASSEMBLY INSTRUCTION FOR METAL CONNECTION

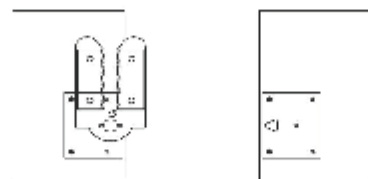
KARE
DESIGN

84744-Armrest / 84745-Armless Chair / 84746- Armless Chaise / 84747-Ottoman

H1 →



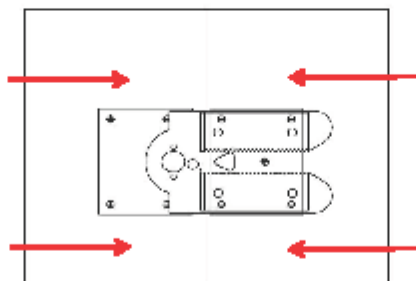
H2 →



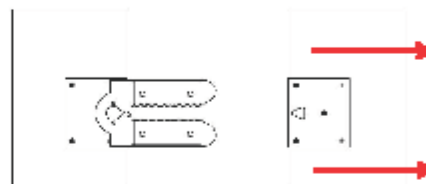
Step 1. You can see the metal connection H1 and H2 on the bottom of chaise and armless chair.



Step 2. Put down H1 clockwise till H1 at the same level of H2.



Step 3. Put H2 into H1, then H1 and H2 connected.



Step 4. If you need separated the metal connection, put H2 forward, then H2 will come out of H1.